

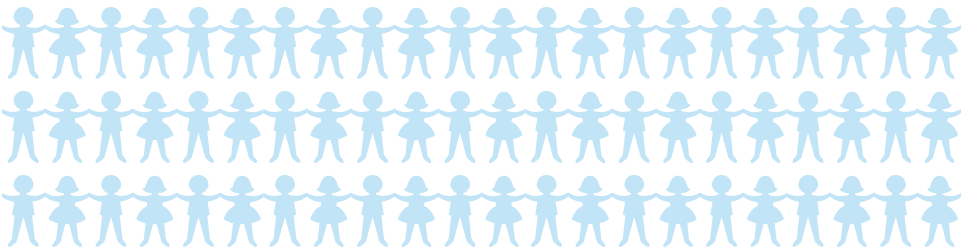


# 120-day report



## On May 31, 2019,

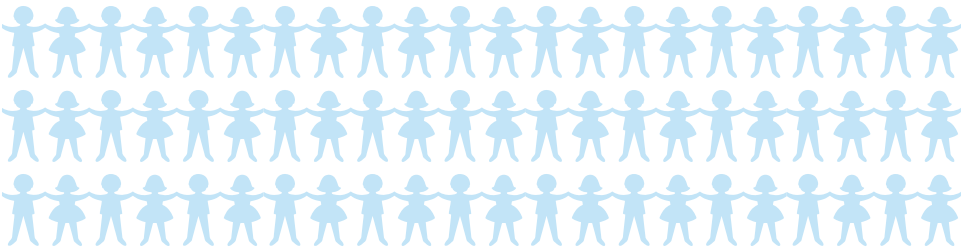
Family Tapestry, a division of The Children's Shelter, launched Community-Based Care in Bexar County.



# 1,935\*

children served by the Family Tapestry Network

(1,635 children in care in the Family Tapestry Network)



Sibling groups were placed together

## 67.7%\*

Children were in the least restrictive environment

## 70.8%\*

Average size of sibling groups that were not placed together

## 3

### Whataburger Center for Children & Youth

A short-term safety net facility designed to keep children out of offices.

## 130

 children and youth served

#### 8A AND 8B PLACEMENTS OF CHILDREN

Children removed from Region 8A were placed in Region 8A

## 72.0%\*

Children removed from Region 8A were placed in Region 8B

## 16.0%\*

Children removed from Region 8A were placed outside of Region 8

## 11.6%\*

Children removed from Region 8A were placed out of state

## 0.4%\*

\*Number of children as of May 31, 2019